



SAMANTHA SMITH ELEMENTARY

Explore Art Orientation

2022-23



Meet Our Team

EXPLORE ART CO-CHAIRS FOR 2022-23

CONTACT: EXPLOREART@SMITHPTSA.ORG



NOVEIRA MAHMOOD

noveira@hotmail.com



SUSMITA ISLAM

susmita.islam@gmail.com



Today's guide

WHAT WE WILL
TALK ABOUT



01

WHAT IS EXPLORE ART?

Volunteer-based art curriculum provided by the PTSA.

02

WHAT DO WE DO HERE?

Provide art lessons for children based on elements of art using various mediums.

03

HOW DOES IT WORK?

Pre-structured lessons are provided for each grade level.

04

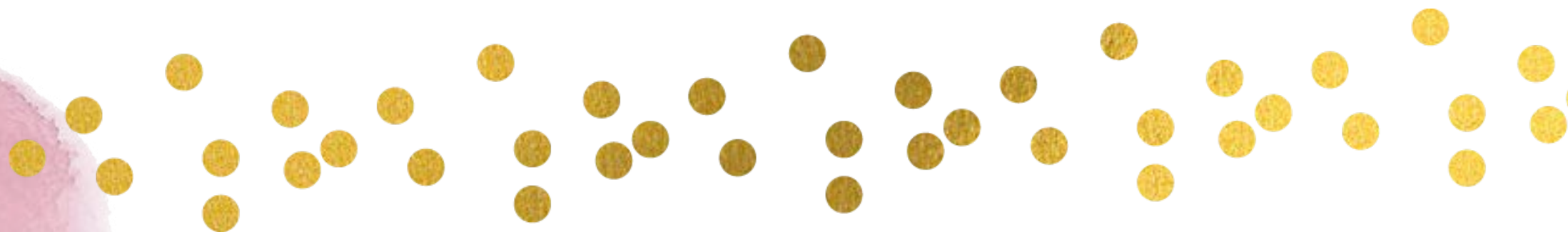
LOGISTICS & EVENTS

All supplies are provided. We showcase kid's project in yearly exhibition "ART WALK".

What is Explore Art?

A CREATIVE LEARNING PROCESS

- Volunteer-based art curriculum funded by PTSA.
- Introduces a variety of art elements, mediums, and artists.
- Opportunity for students to learn through exploration.
- The process of learning art is valued over the end product.





Why Art?

EXPRESSION

Art is a form of self expression. It helps children to develop a sense of their own individuality, self-respect, and an appreciation for others' work.

ACTIVITY

As an activity, art engages thinking process and exploration that stimulates our mind. It encourages to think outside the box and be bold to do experiments.


LEARNING WHILE HAVING FUN

1 in 3 children are visual learners. Art teaches kids to think creatively to solve problems. It develops Hand Eye coordination.



What do we do here?

PROVIDE ART LESSONS ON CURRICULUM

- Parent led.
 - Age appropriate grade level lessons.
 - Explore different mediums including glass and clay!
 - Could be your own project.
 - Remember it is ART not Craft!
- 



How does it work?

EA VOLUNTEERS ARE THE **SOUL** OF THIS PROGRAM



Lead/Co-leads for each class

Helpers for each class

Goal: Immersive lesson experience
for children



What does a Lead do?

PLAN AND CONDUCT LESSONS FOR YOUR CLASS

To get started

1. Contact your teacher to find a day/time that works to teach your lessons.
2. Contact your helpers or solicit some helpers.
3. Take a look at your grade level projects on our website.

Insider Tip:

- Fridays are popular! Try to find another day that works for your class.



What does a Helper do?

HOW CAN YOU HELP?

- Meet with your lead 5-10 minutes before class time to help with set up.
- Help with any prep work that needs to be done: often can be done at home on their own time.
- Listen attentively to your Lead's presentation of the lesson, both as a good role model to the students and so that they know what to expect during the lesson.
- Help every student who has a question, needs supplies, or needs help. mastering a technique **WITHOUT** doing their artwork for them.
- Stay after Explore Art class to help with clean up.
- Help with mounting artwork.
- Help with displays and Art Walk.

A RELIABLE HEPLER IS THE BEST PARTNER FOR ANY EA LEAD



What are the lessons about?

ALL LESSONS ARE BASED ON ELEMENTS OF ART

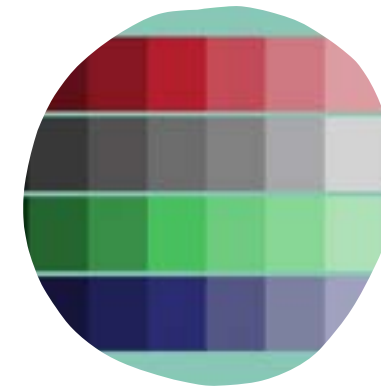
LINE



COLOR



VALUE



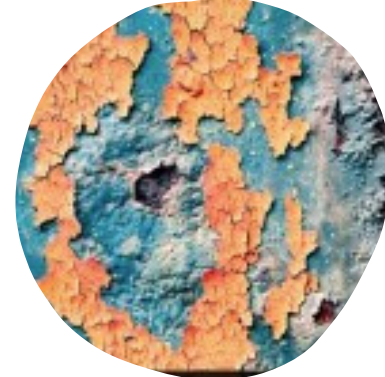
SHAPE



FORM



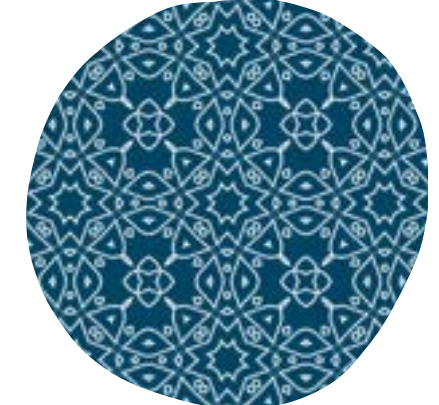
TEXTURE



SPACE



PATTERN



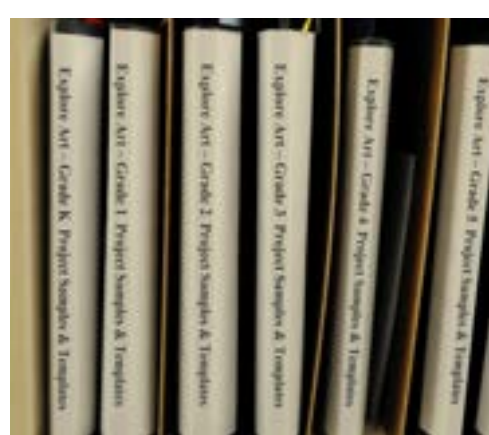
Where do I find
the lessons?

ON OUR WEBSITE

<http://exploreart.smithptsa.org/lessons/>

GRADE LEVEL BINDERS

All grade level projects can also be found in respective binders in the EA cabinet.



Lessons Art Walk Glass Ceramics Linoleum Block Printing Resources

SNOWMAN PERSPECTIVE

SEPTEMBER 15, 2012 BY ADMIN



LESSON PRESENTATION INSTRUCTIONSPACE SNOWMAN PERSPECTIVE Lesson Objectives: Student will learn about how to use space (in art) to create it. Time Required: 2 days Day 1: a few minutes (can be combined with another lesson) Day 2: a few minutes (can be combined with another lesson) Artist: Russell, The Horse Thieves Source: <http://www.deepspace.com/2009/02/08/adorable-close-up-snowman-painting/Materials> [more...](#)

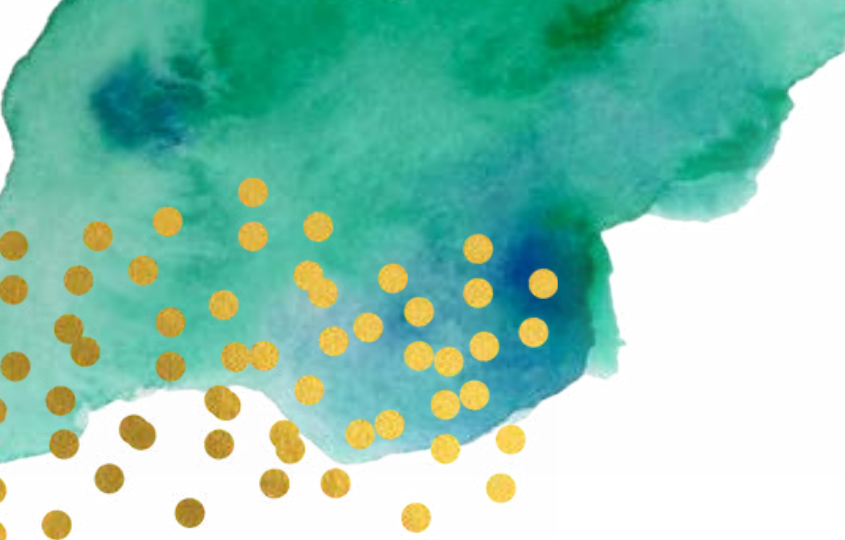
FILED UNDER: 1ST GRADE SPACE

WHALE ON THE HORIZON

SEPTEMBER 15, 2012 BY ADMIN



LESSON PRESENTATION INSTRUCTIONSPACE WHALE ON THE HORIZON Lesson Objectives: Student will learn what a horizon is and how to refer to art. They will also learn about the use of color. Time Required: Day 1: 1 hour Day 2: a few minutes (can be combined with another lesson) Artist: Wyland, Ocean Life Whaling Workshop [\[Read more...\]](#)



Getting ready for a class



PICK A PROJECT

Choose a project for your grade level from the website.

CHOOSE AN ARTIST

Pick an artist and a artwork related to the project

MAKE A SAMPLE

Make a sample ahead of time to see the possible challenges, time required or techniques to apply.



Getting Ready for Your Class




PREPARE

Some projects need additional prep work, i.e. glass. Give yourself plenty of time to prepare ahead of your class.

ASK FOR HELP IF NEEDED

At this stage, it is best to ask your helpers to help you prepare. Any questions you have feel free to reach out EA chairs.





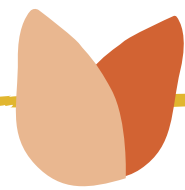
Lesson Structure

ON THE DAY OF YOUR CLASS



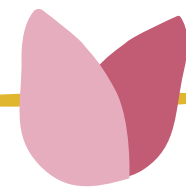
SET UP

Set aside 10 minutes before the class for set up and explain your helpers what to expect during the lesson.



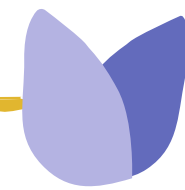
PRESENTATION

Keep it short, 5-10 minutes. It could be powerpoint or simply art print from EA resources. Focus on the element and an artist.



PROJECT

Give the children plenty of time to work through the projects. Some need step by step guide, some can be multi sessioned.



CLEAN UP

Set aside 10 minutes to clean up the classroom and the supplies that were used. Plan your time in segments to run within schedule.

ENCOURAGE CHILDREN

Refrain from expressing your personal opinion about the students' art work

MISTAKES ARE 'HAPPY ACCIDENTS'

There's no such thing as 'ruining' a project or absolute disasters!

THE GOAL IS TO LEARN AS WE CREATE

Producing a perfect piece of art work is not the priority, instead learning as we go is prioritized.

HELP KIDS **WITHOUT** DOING THE WORK FOR THEM

As tempting as it may seem, please refrain yourself from doing so.

Positive classroom experience



Resources

AVAILABLE FOR YOU



01

SAMPLE PRESENTATIONS

On all elements of Art, various artists and some projects. Use them as a guideline when needed.

02

ART PRINTS

A huge selection of art prints in EA cabinet to show as an example.

03

POSTERS

Illustrated posters on Elements of art and Design principles.

04

ART BOOKS

Books demonstrating techniques, project ideas for younger children.

Materials

ALL SUPPLIES REQUIRED FOR THE PROJECTS IN THE BOOKS ARE PROVIDED BY THE PTSA

Every class is allotted:

- **1 clay project,**
- **1 glass project, and**
- **1 watercolor project.**

Tempera paint, Acrylic paint, Watercolors, Chalk pastels, Oil pastels, inks, Crayons, Colored Pencils, Sharpies, Brushes, Paint Palettes, Paper, Colored Paper and more! However, if you need something special for your own project, please consider to arrange that for your class.

Materials

AVAILABLE AT THE EA SUPPLY ROOM



Supplies 101

SHARED RESOURCE COURTESY IS PRACTICED

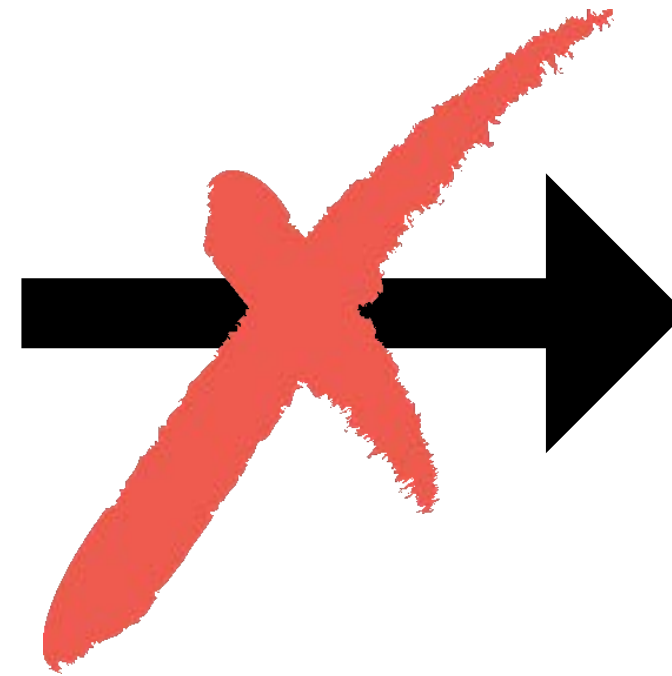
**USE THE RIGHT
TOOL AND
MATERIALS**

**CLEAN THEM
AFTER YOUR
LESSON IS
DONE**

**PLEASE PUT
THE SUPPLIES
BACK WHERE
THEY BELONG**

**ALWAYS USE
CHECK OUT
SHEET TO SIGN
OUT/ IN
MATERIALS**

**PLEASE PUT SUPPLIES BACK THE WAY YOU FOUND THEM
NEAT & CLEAN!**



Check to make sure the supplies you need are there about 1 week before your lesson.

Set aside supplies not more than 2 days before your lesson in a basket and leave it in supply room with your **name, classroom, time** of your lesson and **contact** information.

Do NOT pull supplies for a lesson days away! There may be multiple classes needing the same materials before you!

Gathering Supplies?





WHAT IS NOT PROVIDED?

- Anything that is for an existing lesson we don't have in stock, such as perishable goods, like buttermilk or potatoes can be purchased and money refunded.
- Wrapping paper - use tissue papers or brown bags

DO I NEED TO SPEND MY OWN MONEY?

- You do not have to spend your own money! (Unless you choose to.)
- Newspaper & paper bags for carrying home clay and glass projects are now provided. Please reuse!
- You are not responsible for holiday gifts.



Contact EA Chair

WHEN YOU NEED THE FOLLOWING



CLAY



WATERCOLOR PAPER



GLASS



CANVAS

WE WILL SET IT ASIDE FOR YOU.

Want to Display Projects?

ART WORK SHOULD INCLUDE ONLY THE FIRST NAME OF STUDENT

CLASSROOM/POD

FRONT OFFICE

LIBRARY

STARBUCKS



Things to Remember!

SIGN UP SHEETS FOR:

- Kiln for clay and glass
- Displaying work

KEYS FOR:

- Kiln room (Kindy pod)
- Glass cabinet
- Display cabinet (Office corridor)
- Work area (Portable 159)

Keys always need to be signed in and out. These are kept at the office room.



Our Event: ARTWALK

THURSDAY MARCH 9TH, 2023

- Our only fundraiser for the Explore Art program.
- Every child in every class has their art work represented.
- If you are not planning to do all 8 lessons, please make sure you do your ART WALK lesson first



Art Walk

CELEBRATES THE CREATIVE JOURNEY OF OUR ARTISTS



DISPLAY



FUN



AUCTION



ACTIVITY



Rotation Calendar

USE THE JANUARY ELEMENT FOR YOUR ARTWALK PROJECT

GRADE	TEACHER	Oct	Nov	Dec	Jan	Feb	March	April	May
K	BOUCHER	Shape	Value	Color	Texture	Space	Form	Pattern	Line
K	RODEWALD/PETERSON	Value	Color	Texture	Space	Form	Pattern	Line	Shape
K	SNOWDEN	Color	Texture	Space	Form	Pattern	Line	Shape	Value
1st	AHMED	Form	Pattern	Line	Shape	Value	Color	Texture	Space
1st	GAGNON	Pattern	Line	Shape	Value	Color	Texture	Space	Form
1st	KANGAS	Line	Shape	Value	Color	Texture	Space	Form	Pattern
1st	LAWLER	Space	Form	Pattern	Line	Shape	Value	Color	Texture
1st	PLISCHKE	Texture	Space	Form	Pattern	Line	Shape	Value	Color
2nd	BRYANT	Value	Color	Texture	Space	Form	Pattern	Line	Shape
2nd	FARLEY	Color	Texture	Space	Form	Pattern	Line	Shape	Value
2nd	HUTCHINSON	Texture	Space	Form	Pattern	Line	Shape	Value	Color
2nd	SCHULLER	Form	Pattern	Line	Shape	Value	Color	Texture	Space
Q 2/3	HOWDEN	Line	Shape	Value	Color	Texture	Space	Form	Pattern
3rd	CARLSON	Shape	Value	Color	Texture	Space	Form	Pattern	Line
3rd	HARMON	Value	Color	Texture	Space	Form	Pattern	Line	Shape
3rd	McMASTER	Color	Texture	Space	Form	Pattern	Line	Shape	Value
3rd	TETEAKE	Texture	Space	Form	Pattern	Line	Shape	Value	Color
4th	CARILLO	Shape	Value	Color	Texture	Space	Form	Pattern	Line
4th	CHANG	Space	Form	Pattern	Line	Shape	Value	Color	Texture
4th	HELLING	Form	Pattern	Line	Shape	Value	Color	Texture	Space
4th	McCLELLION	Pattern	Line	Shape	Value	Color	Texture	Space	Form
Q 4/5	BARBER	Line	Shape	Value	Color	Texture	Space	Form	Pattern
Q 4/5	KETTNER	Shape	Value	Color	Texture	Space	Form	Pattern	Line
Q 4/5	THOMPSON	Pattern	Line	Shape	Value	Color	Texture	Space	Form
5th	DAHL	Value	Color	Texture	Space	Form	Pattern	Line	Shape
5th	HENDERSON	Color	Texture	Space	Form	Pattern	Line	Shape	Value
5th	ROSS	Pattern	Line	Shape	Value	Color	Texture	Space	Form
5th	SCOTT	Line	Shape	Value	Color	Texture	Space	Form	Pattern



Thank You!

FOR JOINING THE EXPLORE ART TEAM OF 2022-23



The image features a central, irregularly shaped watercolor blot in shades of light blue, peach, and pink. The word "Question?" is written across this blot in a black, elegant cursive script. The background is white, with decorative watercolor washes in blue, pink, and yellow at the corners. Thin, wavy gold lines are also present in the top-left and bottom-right corners.

Question?